

Modbar Pre-Installation Requirements

A Modbar system consists of a tap installed into the countertop surface and a module installed on a well-ventilated shelf directly below the corresponding tap. Multiple configurations are possible, so be sure to plan your space accordingly.

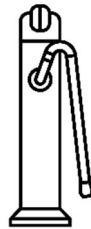
Elements to consider are: taps and modules, pump (included) grinder(s), knock box, filtration system, cup warmer, drains, clearances, optional ABR scales.

Product range

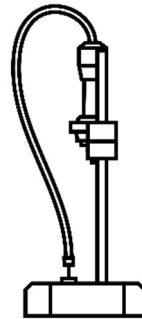
Modbar AV



Steam



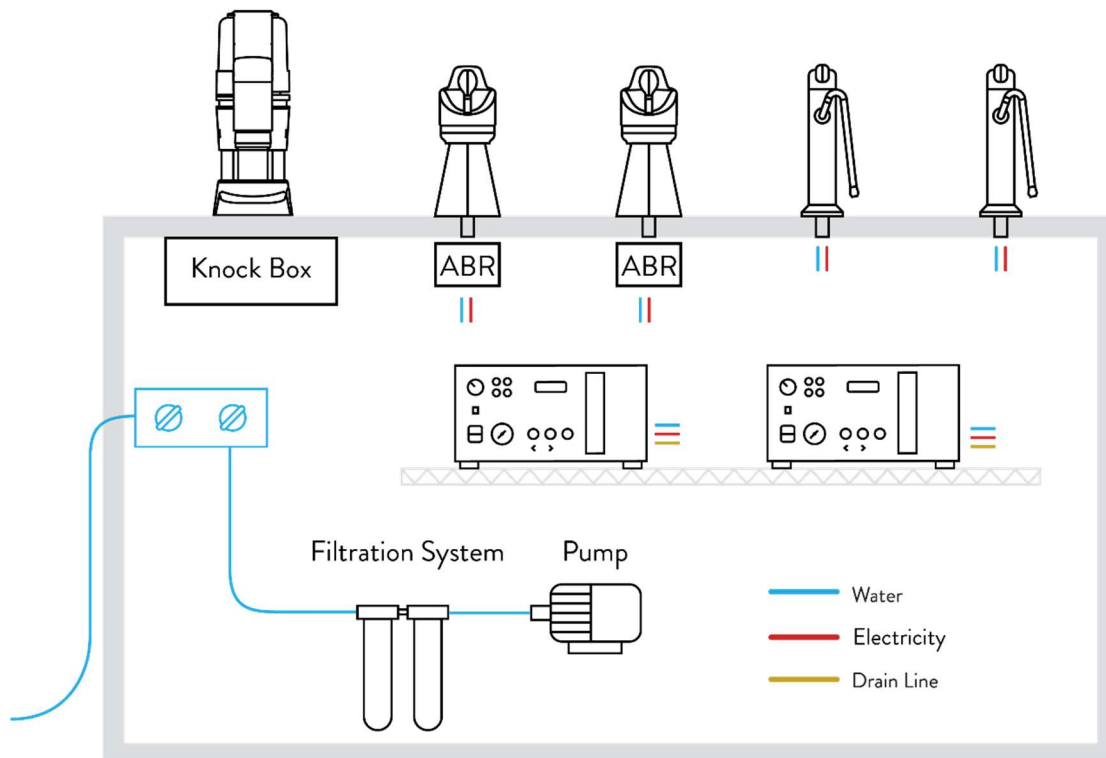
Pour-Over



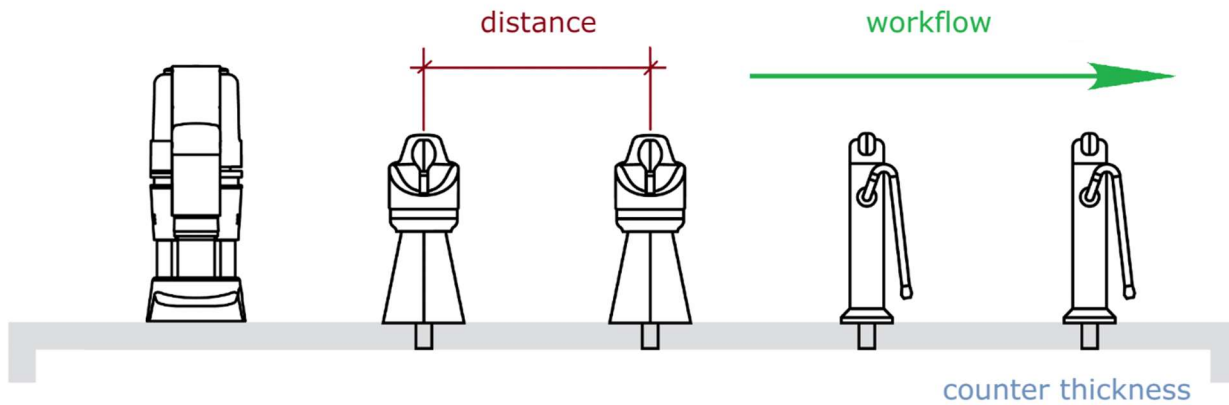
Modbar EP



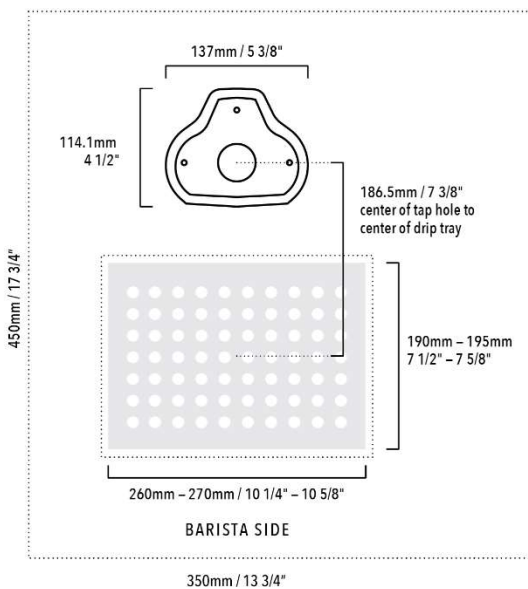
Example setup



ABOVE THE COUNTER

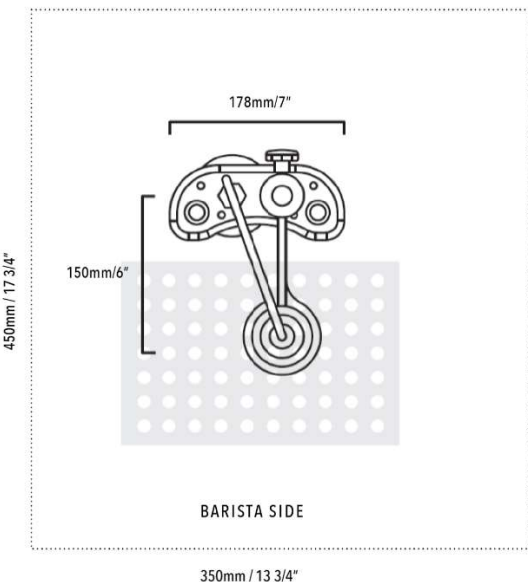


- Ideal tap-hole to tap-hole distance is 350 mm / 13 3/4".
- Consider workflow direction (left-right or right-left).
- Countertop surface thickness should be between 7mm and 75mm / 3/4" and 3".



Example image: Modbar AV

- Use our cutting templates* to drill the correct holes. When using non-standard drip trays make sure you consider the right measurements.
- Approximate surface area for one tap is 350 x 450 mm / 13 3/4" x 17 3/4".
- If you are installing a rinser, do not position it directly below any tap.
- Tip: you can build a drop into the countertop so the grinder height matches the tap height.



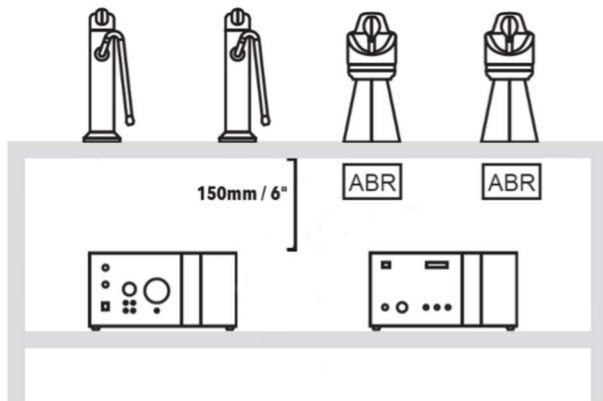
Example image: Pour-Over

- Note: hole for the Pour-Over shaft is off-center. Use cut hole template to align properly.

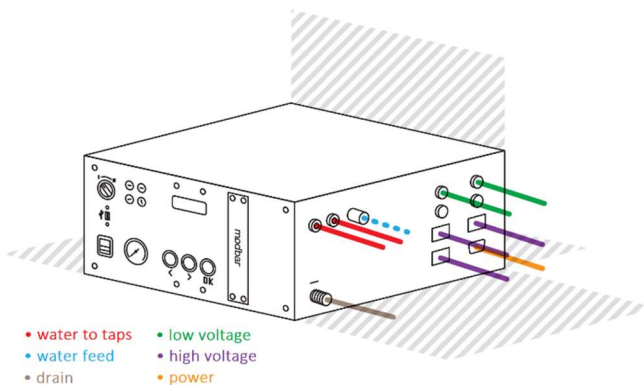
*you can find them in the Modbar boxes, or download them from our website.

BELOW THE COUNTER

- Ensure adequate module clearance to allow ventilation.
- Modbar AV and Steam units have the connections on the side, Pour-Over and EP units have the connections on the back.
- Steam and Pour-Over units do not come with a pump. Make sure to have enough water pressure (min 2,5 bar at the machines). Consider filtration systems may cause pressure drops!



- Position the modules as close as possible to the taps. Shelves or a rack should be provided.
- Allow enough under counter space for ABR scales when necessary.
- Horizontal module alignment is preferred.



Module dimensions*

Modbar AV

43 x 38 x 22 (cm)
17,0 x 14,9 x 8,5 (in)

Steam

43 x 38 x 22 (cm)
17,0 x 14,9 x 8,5 (in)

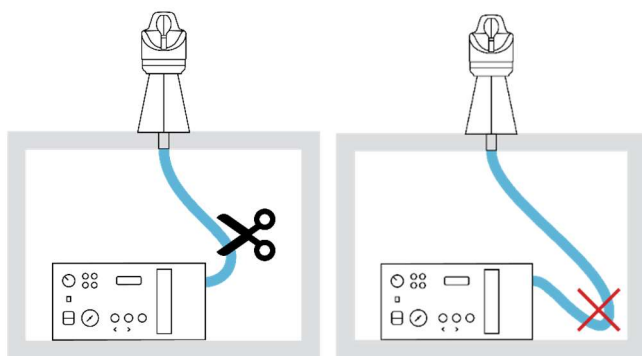
Pour-Over

41 x 42 x 14 (cm)
16,0 x 16,6 x 5,4 (in)

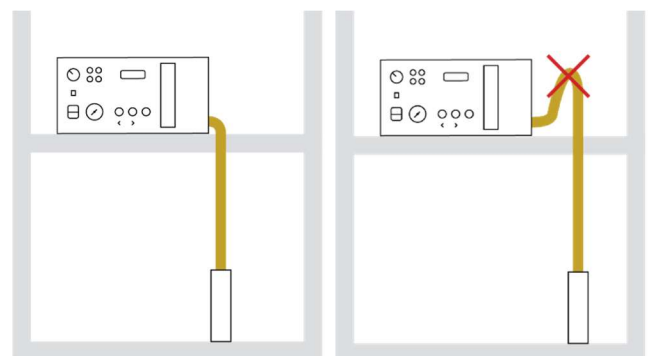
Modbar EP

41 x 42 x 14 (cm)
16,0 x 16,6 x 5,4 (in)

*L x D x H



Cut the tap water tube to the shortest useful length.



Ensure the drain line always slopes downwards.

OTHER SPECIFICATIONS

WATER

	Unit	Min	Max
T.D.S.	ppm	90	150
Total Hardness	ppm	70	100
Total Iron (Fe ⁺² /Fe ⁺³)	ppm	0	0,02
Free Chlorine (Cl ₂)	ppm	0	0,05
Total Chlorine (Cl ₂)	ppm	0	0,1
pH	value	6,5	8,5
Alkalinity	ppm	40	80
Chloride (Cl ⁻)	ppm	not more	30
Line pressure	bar	2,3	6

Measure **water quality** prior to installation. Parameters outside the above range could void your warranty.

POWER

	Modbar AV		Steam		Pour-Over		Modbar EP	
	CE	ETL	CE	ETL	CE	ETL	CE	ETL
Voltage (V)	220-240	208-240	208-240	208-240	220-240	208/240	220-240	208/240
Amps (A)	11	13	14,4	13	12	11A/13	14	12A/15
Power (W)	3233	2733	3306	2704	2760	3000	3220	-
Frequency (Hz)	50/60	60	50/60	60	50/60	60	50/60	60
Phase	single		single		single		single	

Power **connection**: one standard power plug per machine (according to country specifications).

Contact us for more information and other documents!

hello@modbar.com

modbarsupport@lamarzocco.com