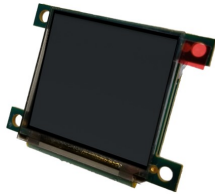




## MODBAR TECHNICAL BULLETIN #17 New Electronic Boards

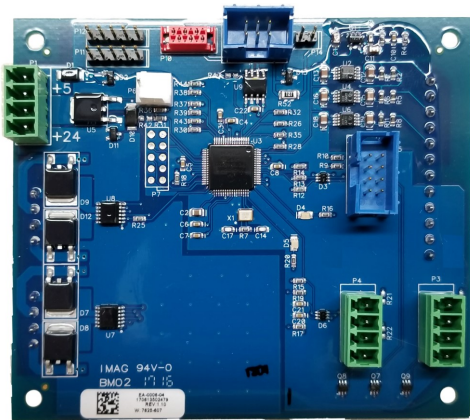
Dear Modbar family member,  
We have moved to a new supplier for our electronic boards for increased reliability.  
The new boards have gone from black to blue in color and the part numbers have all been updated to reflect this change.



EA-0003-04  
Brew Head CPU Board with Display



EA-0004-04  
Brew Head Power Board



EA-0006-04  
Main Board



EA-0008-04  
Display Board

All modules, starting with serial number 10001576, include the new main and display boards. All espresso taps, starting with serial number 2121, include the new brew head and cpu/display boards.

Part Numbers:

1. EA-0003-04 Brew Head CPU Board with Display
2. EA-0004-04 Brew Head Power Board
3. EA-0006-04 Main Board
4. EA-0008-04 Display Board

Please do not hesitate to contact us if you have any questions.

*Modbar Support Team.*  
[service@modbar.com](mailto:service@modbar.com)

20/03/2018



***For technical documents, service and installation guides, please visit***  
<http://www.modbar.com/support>

Copyright © 2018 Modbar LLC, All rights reserved.  
You're receiving this email as a MODBAR authorized  
service partner

Our mailing address is:  
La Marzocco  
Via La Torre 14/H  
Scarperia, FI 50038  
Italy

*MailChimp*