

La Marzocco Technical Bulletin. Stay informed with technical updates and new initiatives at La Marzocco.



MODBAR TECHNICAL BULLETIN

#15

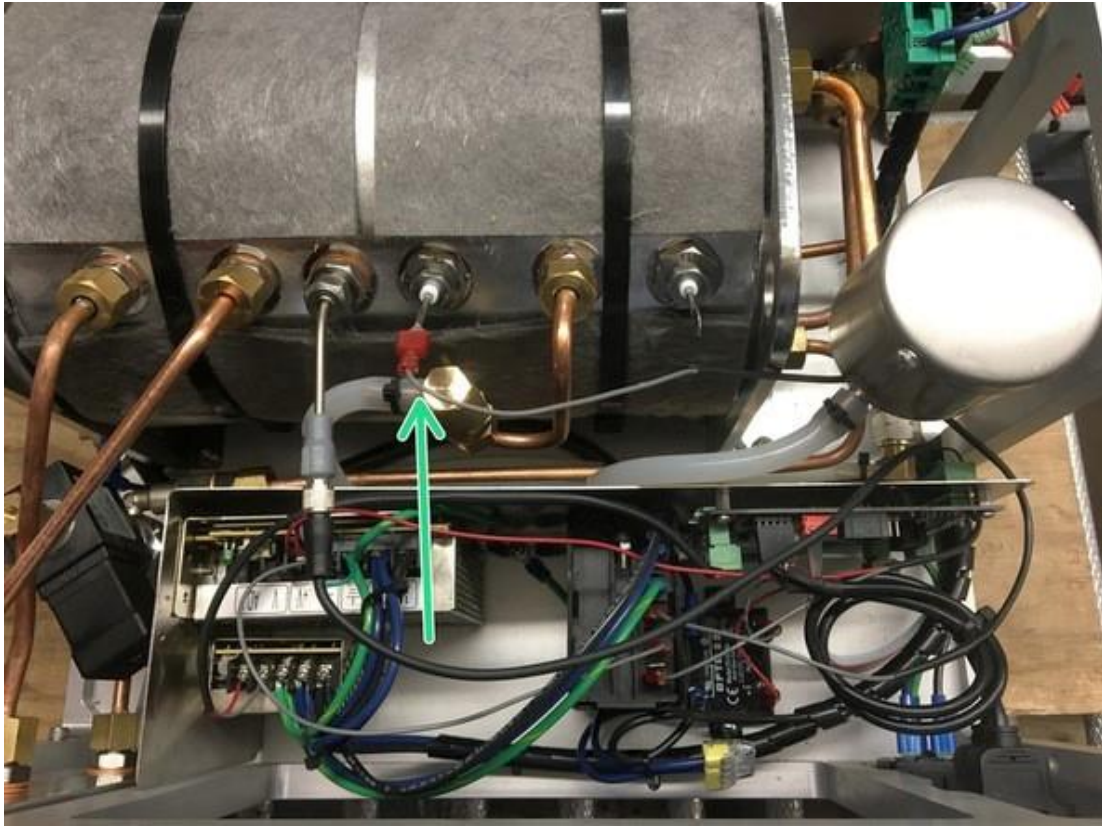
Fill Level Control Probe Placement – Modbar Steam Module

Dear Modbar family member,

Performance is increased in steam modules by changing the fill level probe location to the previous low level probe location. Details for performing this change are outlined in the Modbar Dozuki site. Follow this [Link](#) or go to modbar.dozuki.com, then select Service Guides / Steam / Changing Probe Location for Fill Level Control Assembly.

We recommend that service technicians make this change to increase steam performance. Systems impacted by this change are steam modules built in Ft. Wayne between 06/08/2017 and 02/08/2018 starting with serial number 10001523 to 10001801.

Existing location:



New Location:



Please send any questions or orders to:
service@modbar.com

28/02/2018



For technical documents, service and installation guides, please visit
<http://www.modbar.com/support>

Copyright © 2018 Modbar LLC, All rights reserved.