

La Marzocco Technical Bulletin. Stay informed with technical updates and new initiatives at La Marzocco.



## MODBAR TECHNICAL BULLETIN

#16

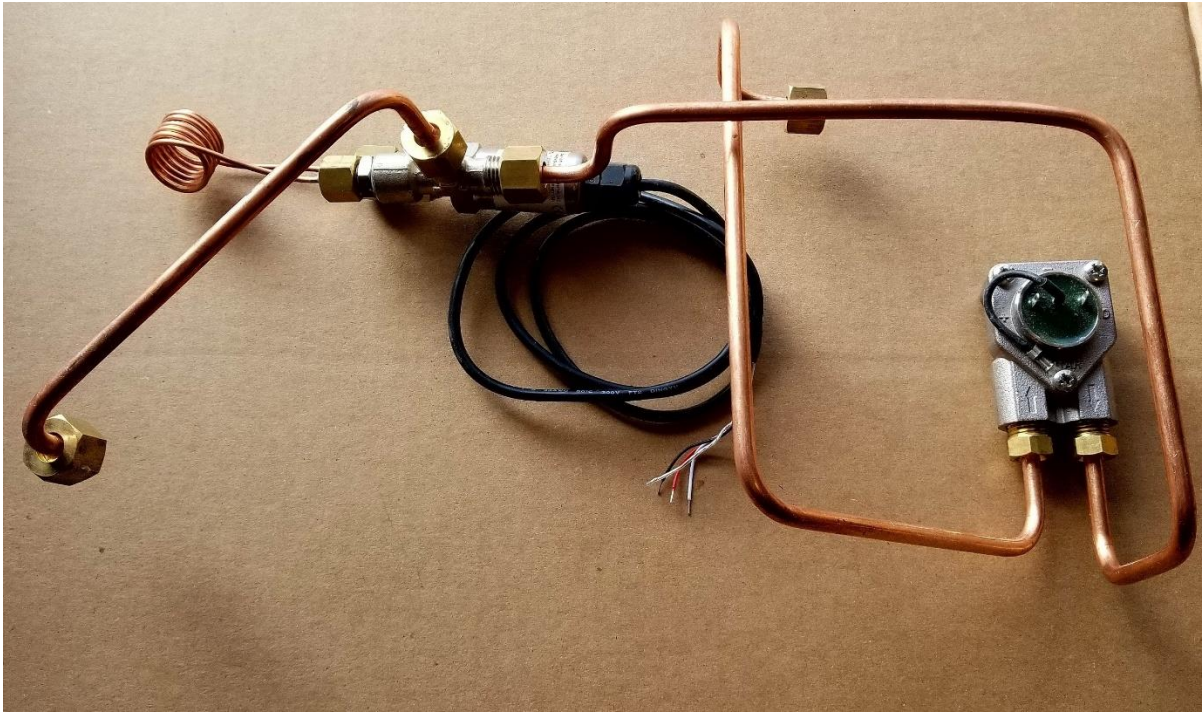
### **Pressure Transmitter, Capillary and Check valve plumbing – Modbar Espresso**

Dear Modbar family member,

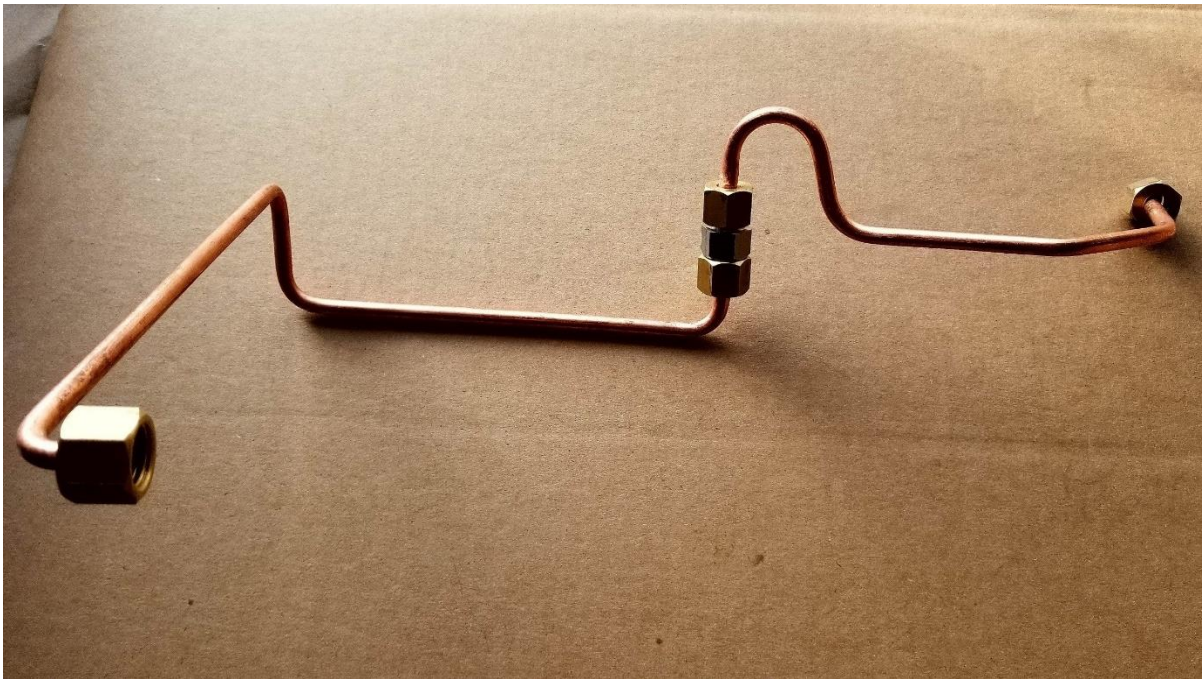
Modbar has introduced new capillary tubing, check valve, and a modified plumbing layout to the espresso module. This change was made to improve reliability of the pressure transmitter. The module will also now show boiler pressure instead of line pressure at rest.

This update will be present on espresso modules starting with Serial Number **10001687** and is retrofittable.

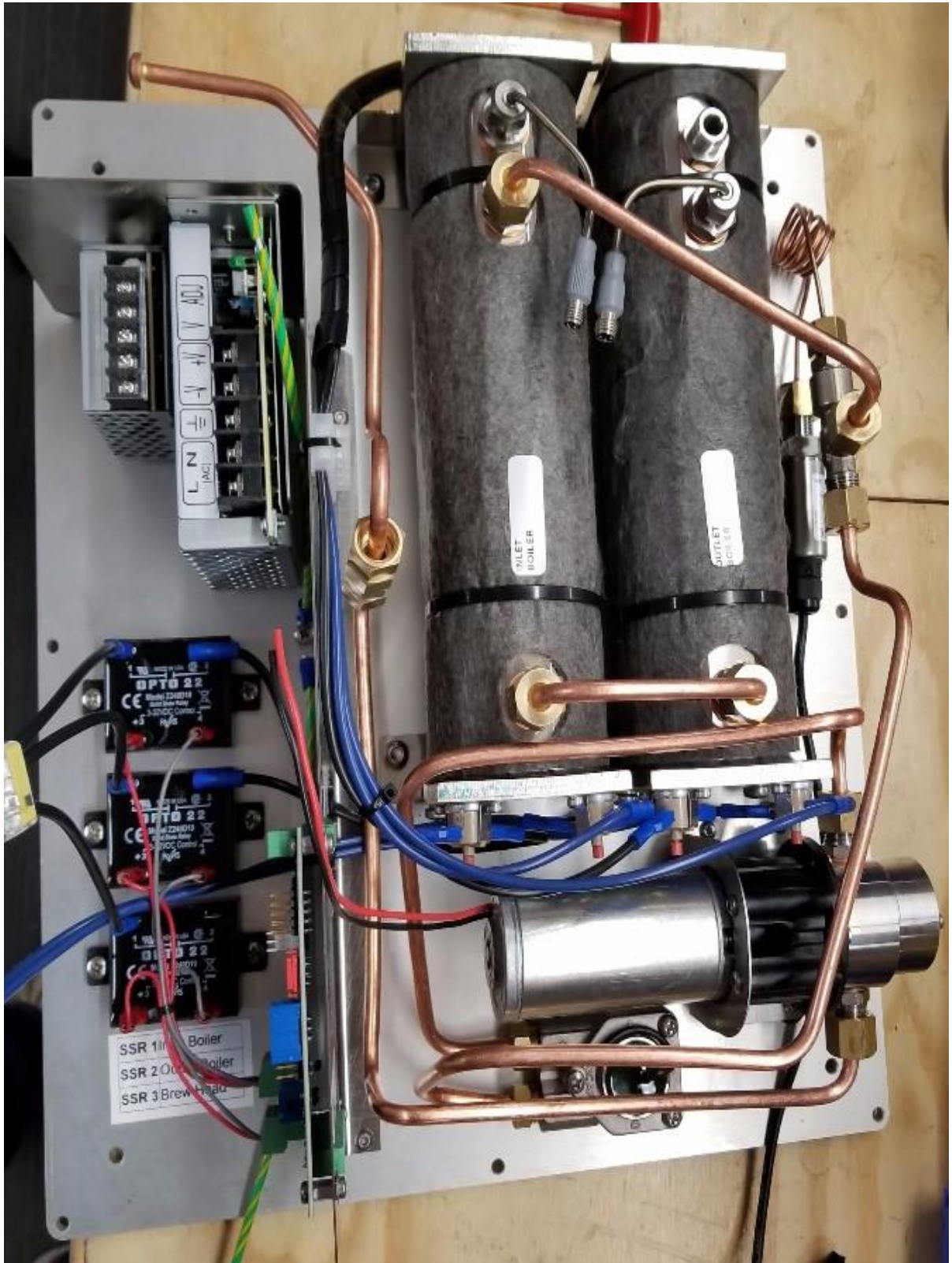
#### **Flow Meter Plumbing:**



**Check Valve Plumbing:**



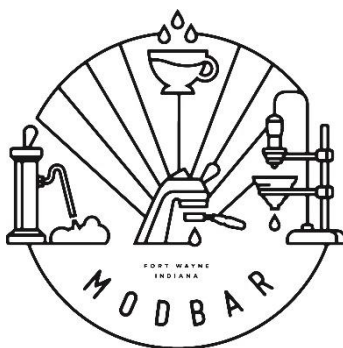
**Assembled Part View:**



<b>Part #</b>	<b>Description</b>
B.2.027	Check Valve
P-6002-01	(Tubing Inlet to Check Valve)
P-6003-01	(Tubing Check Valve to Pump)
P-6004-01	(Tubing Pump to Flow Meter)
P-6005-01	(Tubing Flow Meter to Pressure Transmitter)
TL11-234	(Capillary Tube and Bracket)

Please send any questions or orders to:  
[service@modbar.com](mailto:service@modbar.com)

08/03/2018



*For technical documents, service and installation guides, please visit*  
<http://www.modbar.com/support>

Copyright © 2018 Modbar LLC, All rights reserved.