



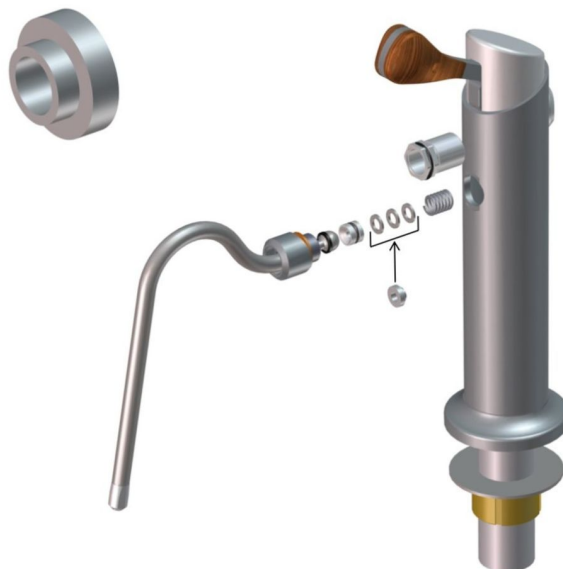
MODBAR TECHNICAL BULLETIN  
#26  
**Wand spacer on new steam Tap**

Dear Modbar family member,

We would like to inform you about a recent modification in the wand assembly of the new steam tap.

To ensure a more precise pre-load of the spring, the 3 washers L1003 have been substituted with a new part, which is machined with very reduced tolerances.

Since the washers were not enough precise for this application, they could make the joint be more or less tight, depending on their thickness. That can make the wand be loose or damage the teflon seal, which can, in some cases, occlude the steam pathway and reduce the steam pressure when the steam wand is fully upright.



This modification takes effect from serial number MB001493 and it's easily retrofittable on previous taps.

The new part is available for order from Nuova Ricambi with code **F.3.113**.

Please do not hesitate to contact us if you have any questions.

*Modbar Support Team.*

[service@modbar.com](mailto:service@modbar.com)

[technicalbulletins@modbar.com](mailto:technicalbulletins@modbar.com)

16/09/2019



***For technical documents, service and installation guides, please visit***  
<http://www.modbar.com/support>

Copyright © 2019 Modbar LLC, All rights reserved.  
You're receiving this email as a MODBAR authorized distributor

Our mailing address is:  
La Marzocco  
Via La Torre 14/H Scarperia,  
FI 50038  
Italy

